

7. Soft keys – functions are dependent on imaging mode. Image optimisation (including frequency and focal points). Rotate to alter function highlighted on screen and press to change function.

Function keys – assign in utility menu including CWD and ECG.

5. Time gain compensation (TGC) – change image brightness at varying depths.

Help key – searchable manual.

Reverse – reverse image, left/right.

Further image optimisation

1. Power

Report – create new or view report.

Harmonic frequencies

Steer (linear probes)

3. Exam – select preset.

2. Patient – add patient details and use to End Exam.

M Mode Pulsed Wave Doppler

Colour Doppler

4. Gain – rotate to adjust gain/overall brightness.

Power Doppler

B Mode

Imaging/measurement keys:

- A** Cursor
- B** Clear
- C** Body Mark
- D** Calcs
- E** Doppler Cursor
- F** Scan Area
- G** Enter

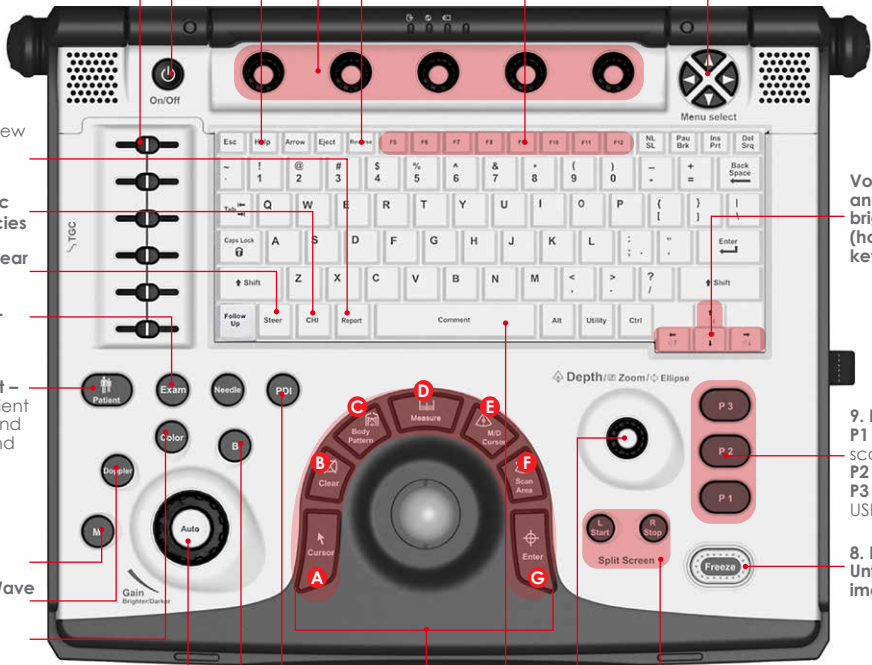
Comment – add annotations.

Dual screen

Volume and screen brightness (hold CTRL key)

9. Print Keys:
P1 Save to scanner.
P2 Print
P3 Send to USB only.

8. Freeze/Unfreeze image



Connecting the Probe – Handling the probe carefully, slide the connector straight into the port whilst the machine is not imaging (e.g. turned off, in patient entry screen or in a frozen image). Lift the probe latch into locked position.

- 1. Power** – Turn scanner on/off.
- 2. Entering Patient Data** – Press the "Patient" Key. Enter a name and unique patient ID. Select "Exit".
- 3. Selecting a Preset** – Press the "Exam" key. Use trackball and Enter key to select the appropriate exam type.
- 4. Gain** – Increases or decreases the overall brightness of the image.
- 5. TGC** – Alter to produce evenly gained image.
- 6. Depth** – Rotate so that the region of interest occupies approximately $\frac{3}{4}$ of the screen.
- 7a. Frequency** – Is changed using the left most soft key in B-Mode. A higher frequency setting provides higher resolution to the image, however, penetration is reduced. A lower frequency setting improves penetration ability, however, the resolution is diminished.
- 7b. Focus** – Controlled by the right most soft key in B-Mode. Rotate to move the focal position up and down the depth scale.
- 8. Freeze** – Freeze image, use trackball to scroll back through last few seconds.

- 9. Storing Image** – Press "P1" to store images to the hard drive. Press "P2" to print to a thermal printer (if included). Press "P3" to store JPEG/ AVI to a USB Memory stick. Pressing a "P" button on a frozen image stores a still image. Pressing a "P" button on a moving image stores a clip.

N.B. Aim is to save all images to scanner hard drive.

Annotating an image – To add text to an image, begin typing on the keyboard. The word fill-in function will offer words while typing. Press the "tab" key on the keyboard to accept an offered word. Press "Comment" key [space bar] to choose a word from the library with the pointer and press the "Enter" key.

Colour Doppler – Press the "Colour" key. Use the trackball to move the colour box. Press "Scan Area" to change the size of the colour box using the trackball. Press "Scan Area" again to set the colour box size.

Power Doppler – Press the "PDI" key. Adjust as per the colour flow.

End Exam – Press patient button.

For more information/ how to videos/ applications support and clinical resources please visit our website www.imv-imaging.co.uk

Get in touch now

 info@imv-imaging.com  www.imv-imaging.co.uk ireland@imv-imaging.com 

 +44 (0) 1506 460023

Follow us     

+353 (0) 42 932 0070 